

SMF1

16 mm, flat, high profile. Protected against water and dust.

SMF1 is an ultra-durable non-illuminated piezo switch developed to perform in the toughest conditions. Containing no mechanical moving parts. SMF1 is used in such areas as food processing & restaurants, marine & luxury yachts, oil & gas and the chemical industry.

Key Characteristics:

- Aviation Grade Aluminum or Stainless Steel 303 standard (304, 316 optional)
- Anodized Aluminum in silver, black, red, green, blue or gold finishes
- Laser Engraving or Anodized printing optional



Electrical Data

Switch Function	N.O. Momentary (N.C. optional) Prolonged, Toggle (On/Off), Continuous as well as Programmable, Timer, Slide, Self Diagnostic, and WiFi Enabled optional
Switch Voltage	0-24 AC/DC
Switch Current	0.2 A standard (up to 1 Amp optional)
Rated Breaking Capacity	Power Dissipation < 5 Watt
Operating Cycles	> 50,000,000
Switch Resistance OFF	> 20M Ohm
Switch Resistance ON	< 5 Ohm
Switch Capacitance	10 pF
Switch On Duration	Up to 20 sec
Contact Configuration	Free Polarity

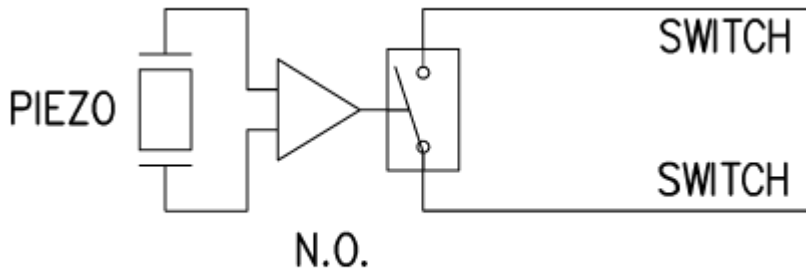
Mechanical Data

Housing Materials	Aluminum 6061 T651, Stainless Steel (Type 303, 304 or 316) or Plastic
Actuating Force	2-5 Newtons
Non-Illuminated	Polycarbonate
Connection	22 AWG standard, (pin, tab or terminal blocks optional)
Shock Protection	IK 10
Fastening Torque	2.5 Nm

Environmental Data

Operating Temperature	-20°C to +75°C
Storage Temperature	-40°C to +125°C
IP Protection	IP69 K

Electrical Diagram



Technical Drawing

