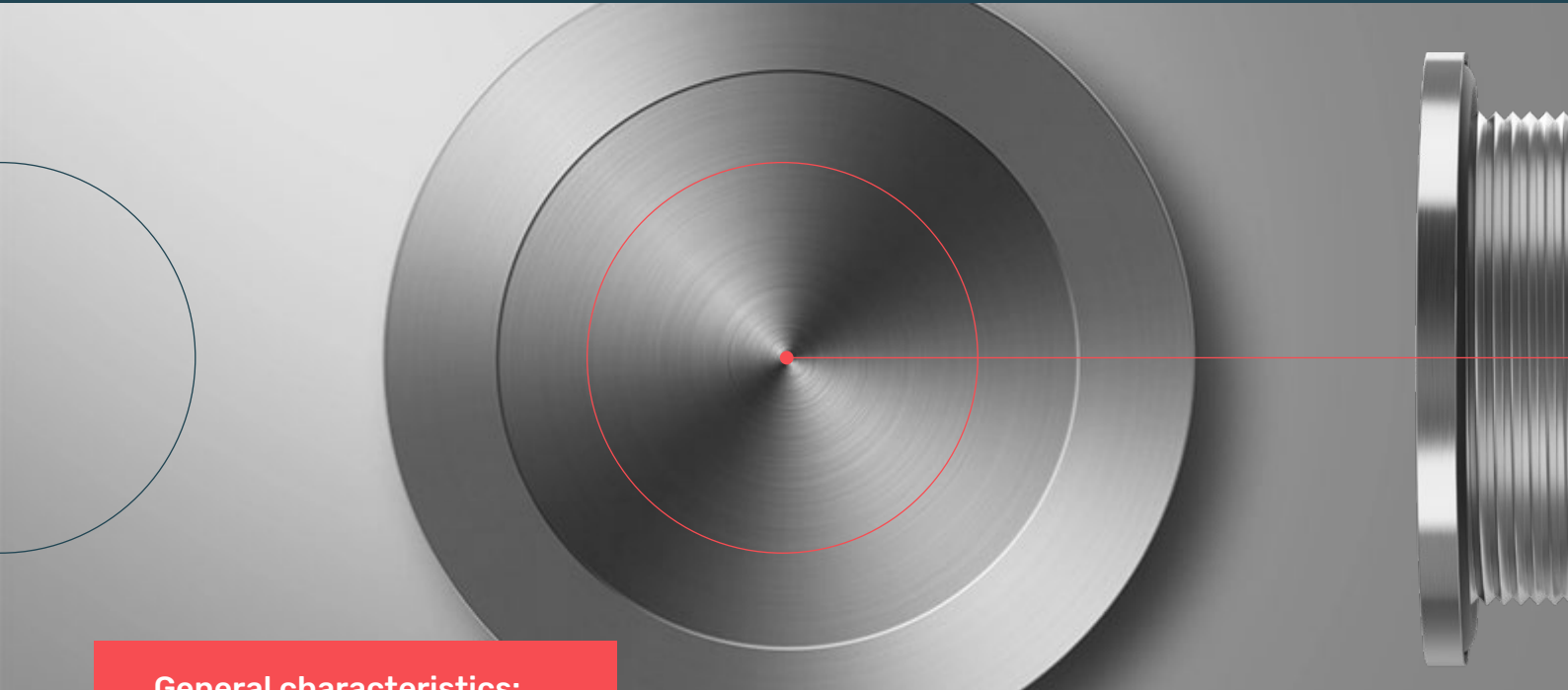


TOUCH METAL PIEZO SWITCHES



General characteristics:

- No moving parts – completely sealed against the environment
- One piece metal housings - milled for strength & vandal resistance
- Touch activated - operation by hand, foot, gloves or tools
- Weatherproof - operation unaffected by water, ice, humidity, etc.
- Withstands constant cleaning with the most aggressive detergents
- Temperature ratings from -20°C to +75°C
- Rated at 50,000,000 activations - indestructible
- Switching functions - momentary, toggle, prolonged, continuous, timer and programmable
- Optional SmartSwitch technology - self-diagnostic, WiFi, BlueTooth and IoT capabilities
- Optional tactile feedback
- LED Ring or point illumination in RGB color selection
- Material - Aluminum/Stainless Steel/Plastic/Chrome Plated Brass/Glass
- Graphics - customized anodized printing or laser engraving
- Exceeds Class 1 Div 1 Hazardous Location requirements
- Impact proof to IK10
- IP68K-IP69K wash-down proof up to 100 Bar (many submerged installations)
- Force required for switch operation: 3-5N
- Compliant with IEC/EN 60529, CE, ROHS, REACH
- Industry leading five year warranty
- Neither creates, nor is effected by ESD, RFI or EMI. EMP-proof versions available as well

TOUCH METAL PIEZO SWITCHES

Electrical data

Switch Function	N.O. Momentary (N.Closed optional) Prolonged, Toggle (On/Off), Continuous as well as Programmable, Timer, Slide, Self Diagnostic, and WiFi Enabled Optional.
Switch Voltage	0-24 AC/DC
Switch Current	0.2A Standard (up to 1Amp optional)
Rated Breaking Capacity	Power Dissipation < 5 Watt
Operating Cycles	> 50,000,000
Switch Resistance OFF	> 20M Ohm
Switch Resistance ON	< 5 Ohm
Switch Capacitance	10 pF
Switch On Duration	Up to 20Sec
Contact Configuration	Free polarity

Mechanical data

Housing Materials	Aluminium 6061 T651 or Stainless Steel (Type 303, 304 or 316) Plastic
Actuating Force	2-5 Newtons
Illuminated Ring	Polycarbonate
Connection	22 AWG std, (pin, tab or terminal blocks optional)
Shock Protection	IK 10
Fastening Torque	2.5 Nm

Environmental Data

Operating Temperature	-20°C to +75°C
Storage Temperature	-40°C to +125°C
IP Protection	IP69K

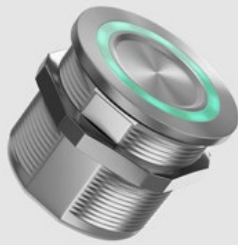
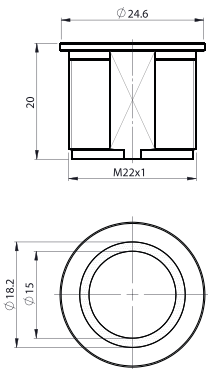


TOUCH METAL PIEZO SWITCHES | RING ILLUMINATED



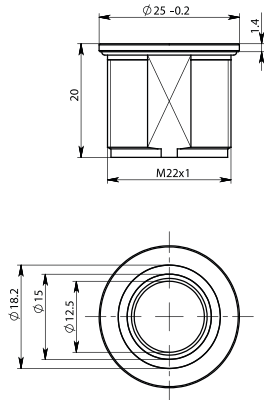
SBR11

22mm, Flat



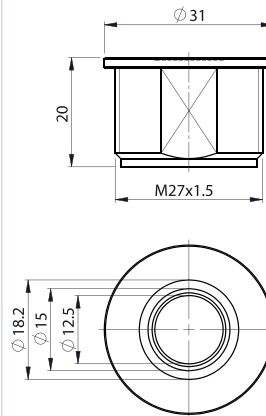
SBR22

22mm, Recessed



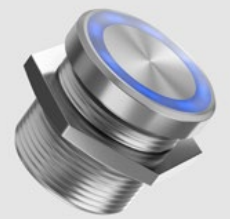
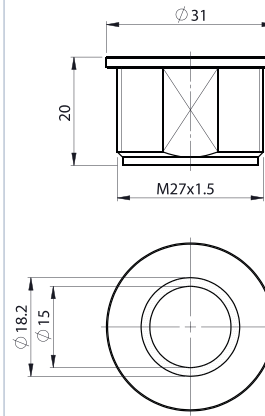
SBR33

27mm, Recessed



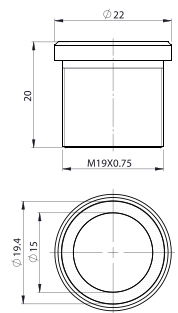
SBR44

27mm, Flat

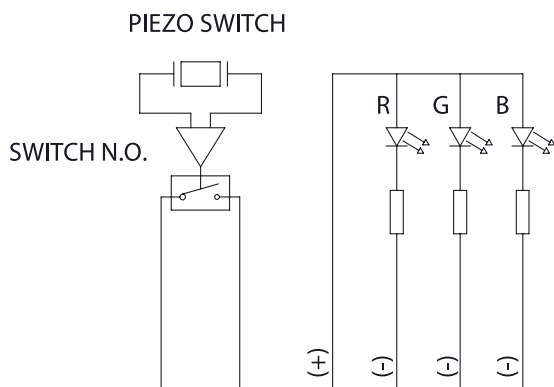


SBR55

19mm, Flat



Electrical Diagram



Details

12 or 24V LEDs standard (3.3V and 5V available)

Red, Green, Amber, Blue, White or Bi-Color Red/Green or Tri-Color R-B-G LEDs

Aviation Grade Aluminum or Stainless Steel 303 (304, 316 optional)

Tactile versions with center movement optional

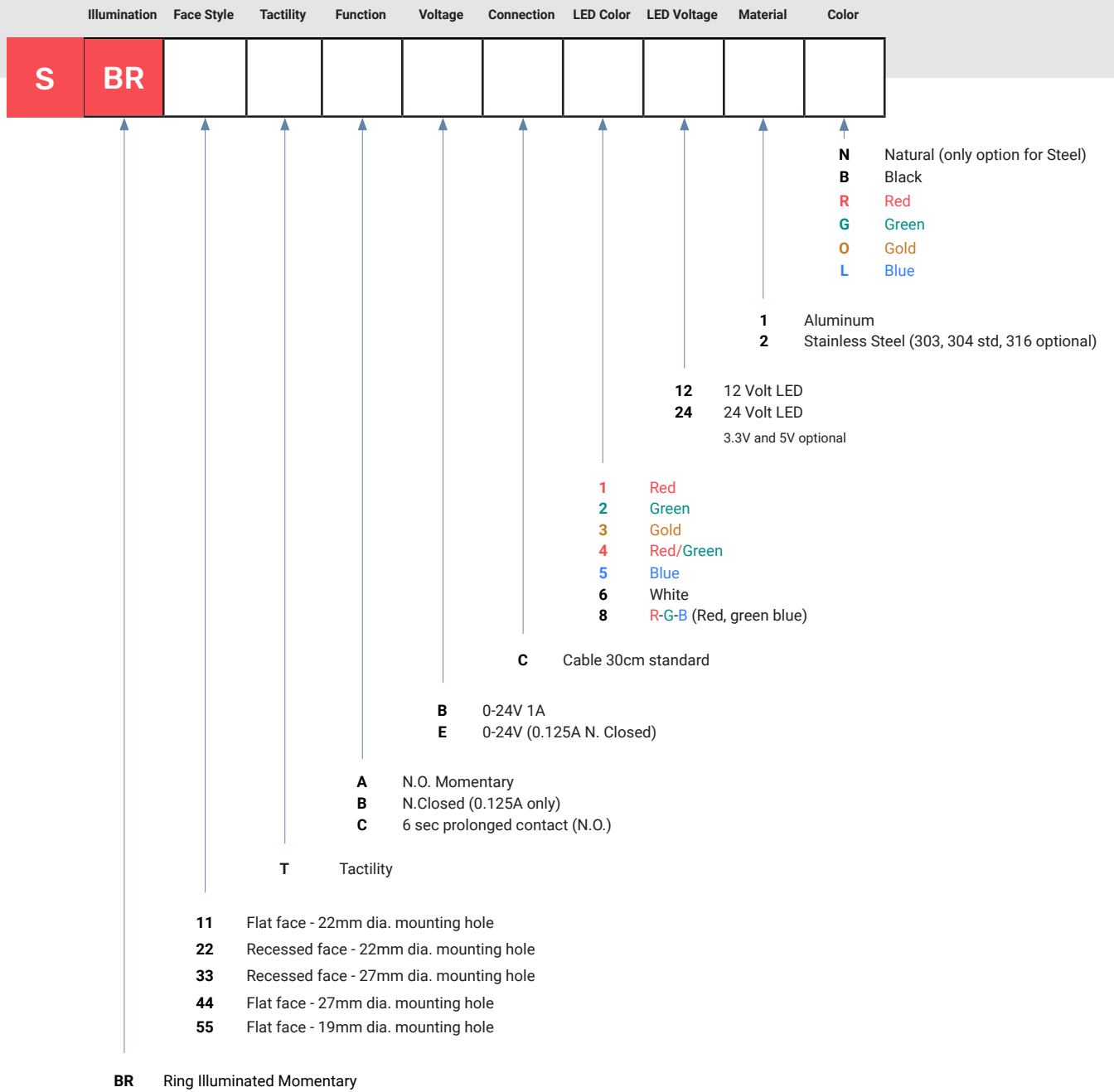
Momentary, N.O. standard (N.C., Prolonged, Haptic, Toggle, Continuous optional)

30cm Cable standard (longer length, connectors, pins or terminal block optional)

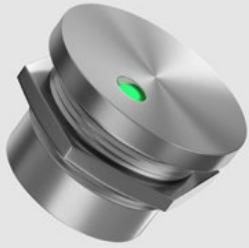
Glass and Plastic versions available as well

TOUCH METAL PIEZO SWITCHES | RING ILLUMINATED

SBR Part Numbering Chart

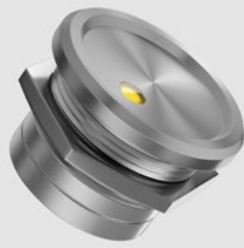


TOUCH METAL PIEZO SWITCHES | POINT ILLUMINATED



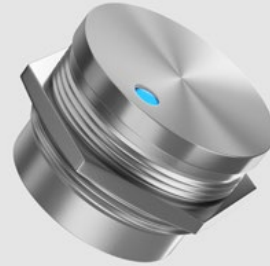
SML1

22.5mm, Flat



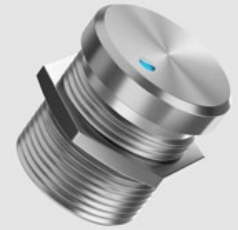
SML2

22mm, Recessed



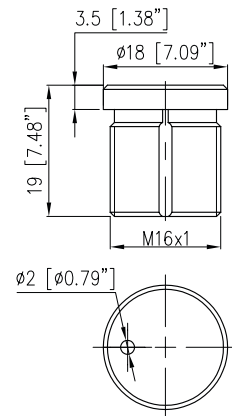
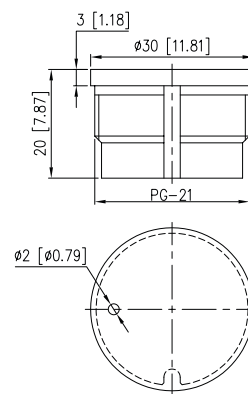
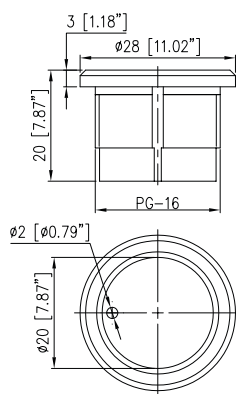
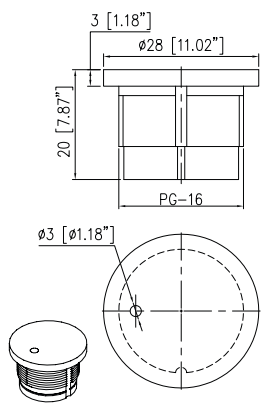
SML3

28.5mm, Flat

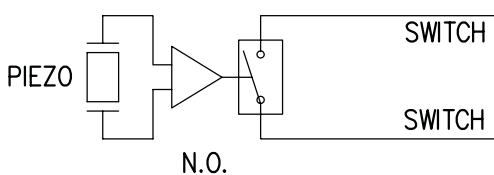
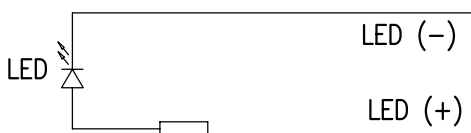


SML5

16mm, Flat



Electrical Diagram



Details

12 or 24V LEDs standard (3.3V and 5V available)

Red, Green, Amber, Blue, White or Bi-Color Red/Green LEDs

Aviation Grade Aluminum or Stainless Steel 303 std (304, 316 optional)

Anodized Aluminum in Silver, Black, Red, Green, Blue or Gold Finishes

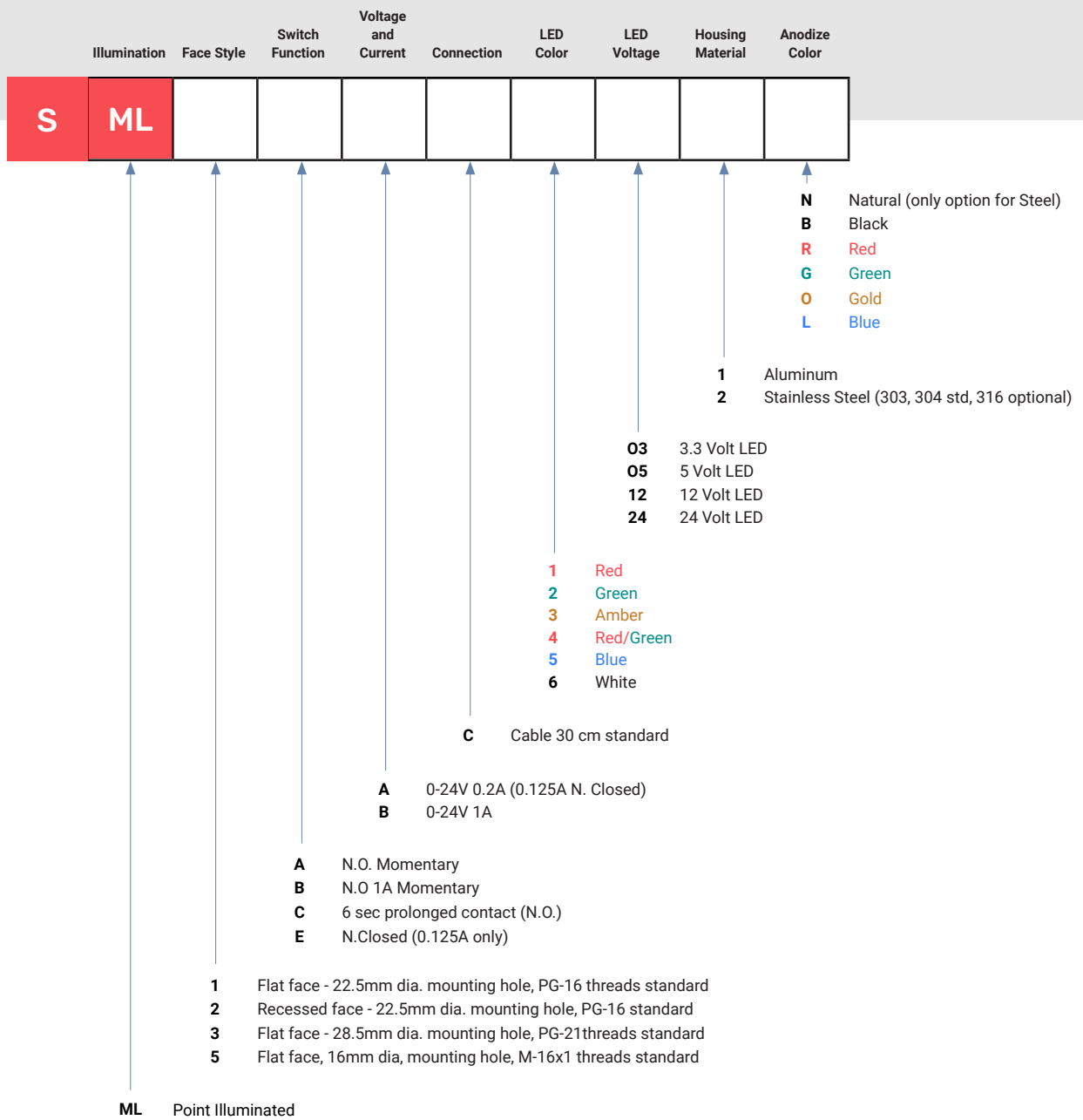
Momentary, N.O. standard (N.C., Prolonged, Haptic, Toggle, Continuous optional)

30cm Cable standard (longer length, connectors, pins or terminal block optional)

0.2A, 24V standard (1A, 24V available)

TOUCH METAL PIEZO SWITCHES | POINT ILLUMINATED

Point Illuminated Switches – Type SML part numbering chart

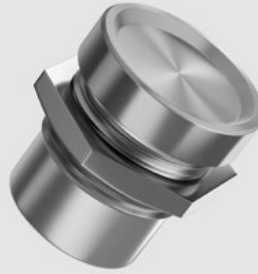
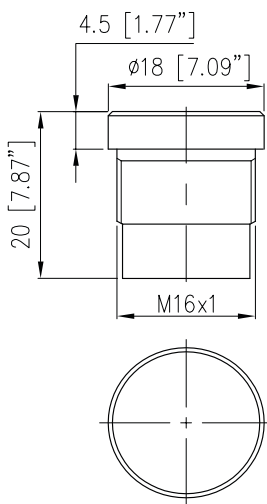


TOUCH METAL PIEZO SWITCHES | NON-ILLUMINATED



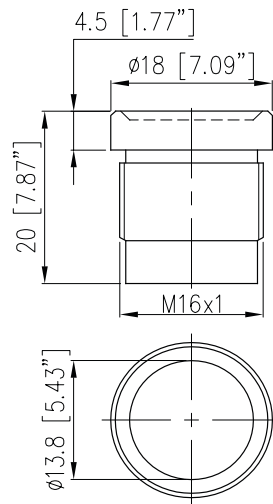
SMF1

16mm, Flat, High Profile



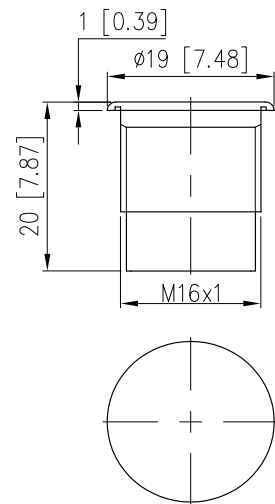
SMF2

16mm, Recessed, High Profile

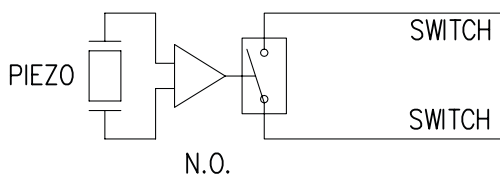


SMF6

16mm, Flat, Low Profile



Electrical Diagram



Details

Aviation Grade Aluminum or Stainless Steel 303 std (304, 316 optional)

Anodized Aluminum in Silver, Black, Red, Green, Blue or Gold Finishes

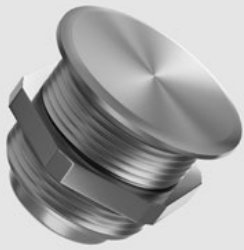
Momentary, N.O. standard (N.C., Prolonged optional)

30cm, 22 gauge wires standard
(longer length, connectors, pins or terminal block optional)

0.2A, 24V standard (1A, 24V available)

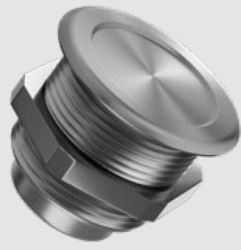
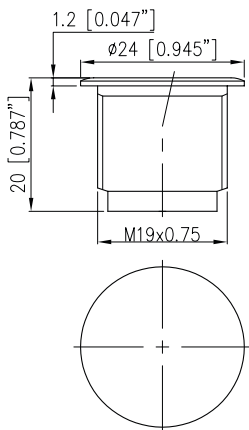
Laser Engraving or Anodized printing optional

TOUCH METAL PIEZO SWITCHES | NON-ILLUMINATED



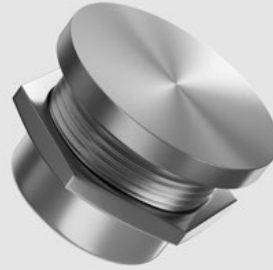
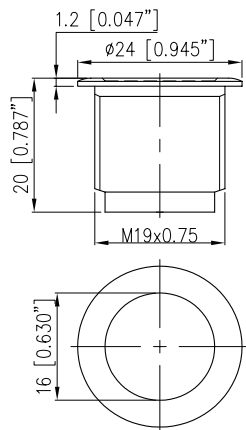
SBS1

19mm, Flat



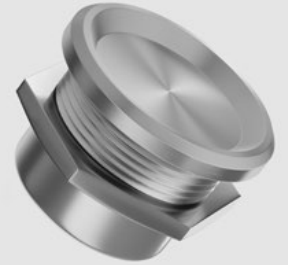
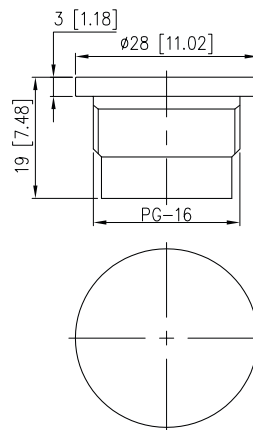
SBS2

19mm, Recessed



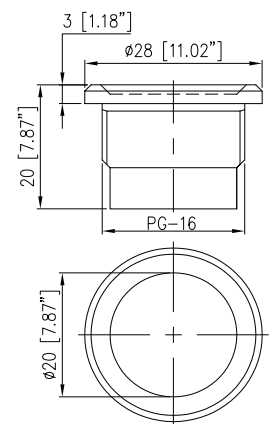
SMA1

22.5mm, Flat

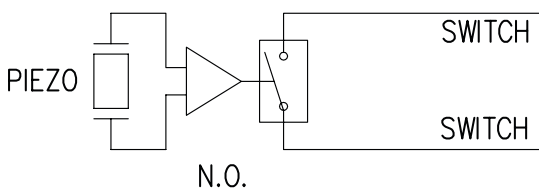


SMA2

22.5mm, Recessed



Electrical Diagram



Details

Aviation Grade Aluminum or Stainless Steel 303 std (304, 316 optional)

Anodized Aluminum in Silver, Black, Red, Green, Blue or Gold Finishes

Momentary, N.O. standard (N.C., Prolonged, Haptic, Toggle, Continuous, Data Output optional)

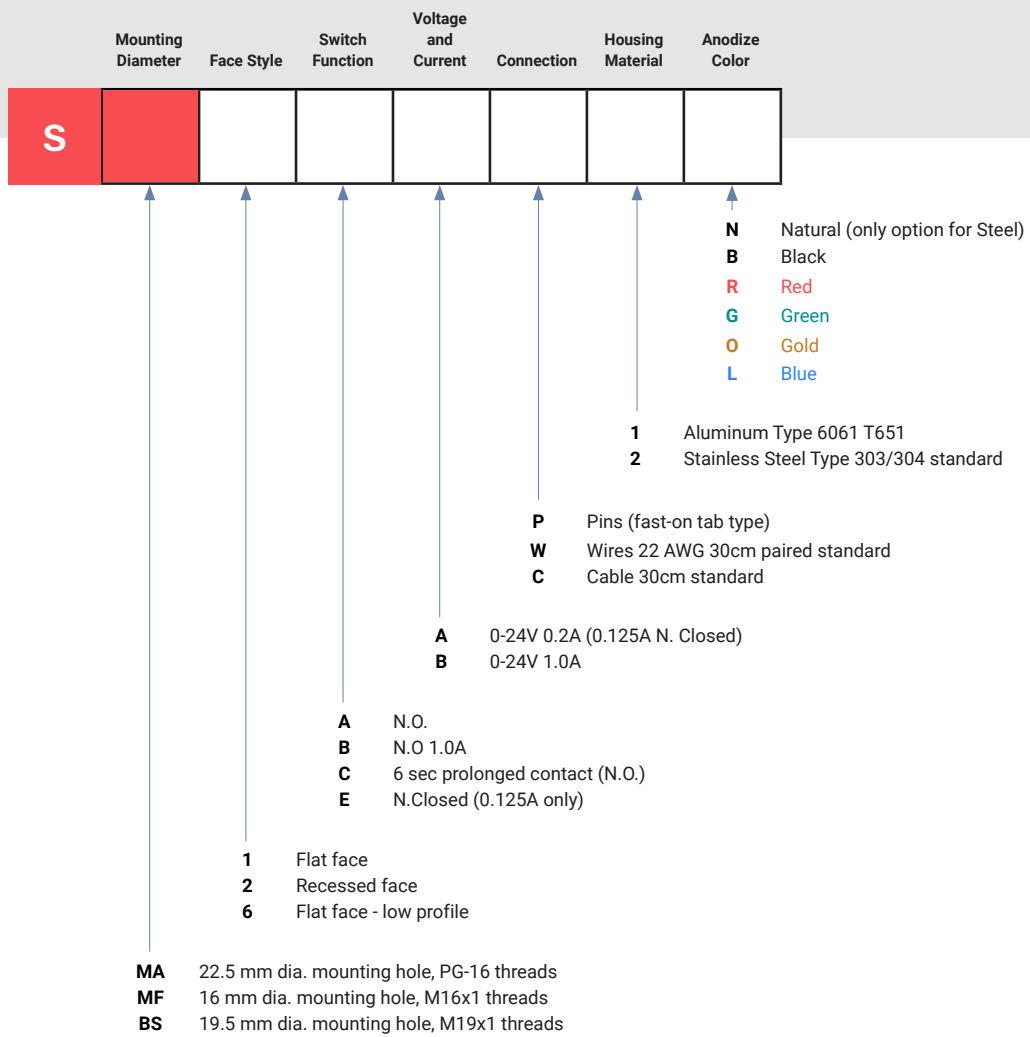
30cm, 22 gauge wires standard (longer length, connectors, pins or terminal block optional)

0.2A, 24V standard (1A, 24V available)

Laser Engraving or Anodized printing optional

TOUCH METAL PIEZO SWITCHES | NON-ILLUMINATED

Momentary Switches – Types SMA, SMF, SBS part numbering chart

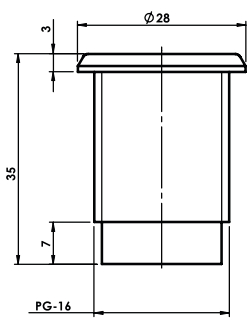


TOUCH METAL PIEZO SWITCHES | SPECIAL FUNCTION



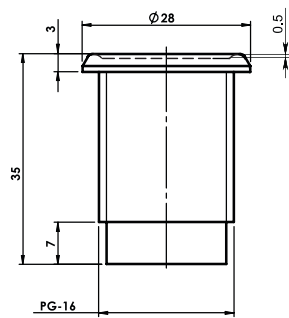
SBA1

22.5mm, Flat



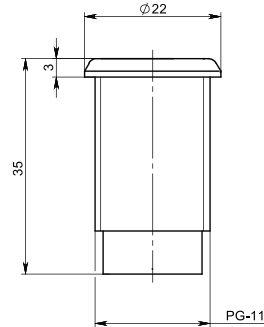
SBA2

22.5mm, Recessed



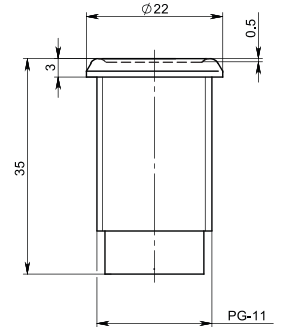
SBF1

18.6mm, Flat

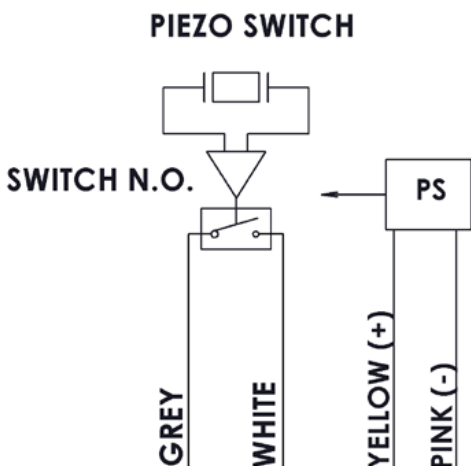


SBF2

18.6mm, Recessed



Electrical Diagram



Details

Toggle or Continuous (Programmable, Haptic and Data Output optional)

Aviation Grade Aluminum or Stainless Steel 303 std (304, 316 optional)

Anodized Aluminum in Silver, Black, Red, Green, Blue or Gold Finishes

30cm, 22 gauge wires standard (longer length, connectors, pins or terminal block optional)

0.2A, 24V standard (1A, 24V available)

Laser Engraving or Anodized printing optional

TOUCH METAL PIEZO SWITCHES | SPECIAL FUNCTION

Special Function Switches – Types **SBA** and **SBF** part numbering chart

