



Infinity

Unleash Endless Control: Push to Infinity

Take your boat control to a new level with the Infinity Switch - where innovation meets excellence. Designed to exceed expectations with its state-of-the-art piezo touch technology, robust design, captivating illumination, and continuous push functionality, this switch sets a new standard for excellence on the water.

Key Characteristics

- **Continuous Activation:** Enjoy uninterrupted control over your boat's functions with the Infinity Switch, enabling long and continuous activation for seamless operation.
- **Reliability and Durability:** Built to conquer the demanding marine environments, this sealed switch offers absolute reliability and durability, ensuring long-lasting performance.
- **Intuitive Illumination:** Enjoy clear visibility with either dot-illumination or a captivating tri-color RGB ring-illumination.
- **Ultra-Rugged Construction:** Either stainless-steel or anodized aluminum housing, combining strength and style.
- **Enhanced Touch Activation:** Whether it's your hand, gloves, or tools, this switch's user-friendly interface adapts to your preferred method of activation.
- **Weatherproof Performance:** Designed to withstand harsh marine environments, unaffected by salt water, rain, ice, humidity, UV rays, dust and challenging weather conditions, ensuring reliable operation regardless of the elements.
- **Uncompromised Aesthetics:** Its elegant design and customizable illuminations add a touch of elegance and modernity to any vessel, impressing both passengers and onlookers.



Electrical Data

Switch Function	Continuous
Switch Voltage	1-24V AC/DC
Switch Current	0.2A
Operating Voltage	9-12V DC
Current Consumption	100mA max

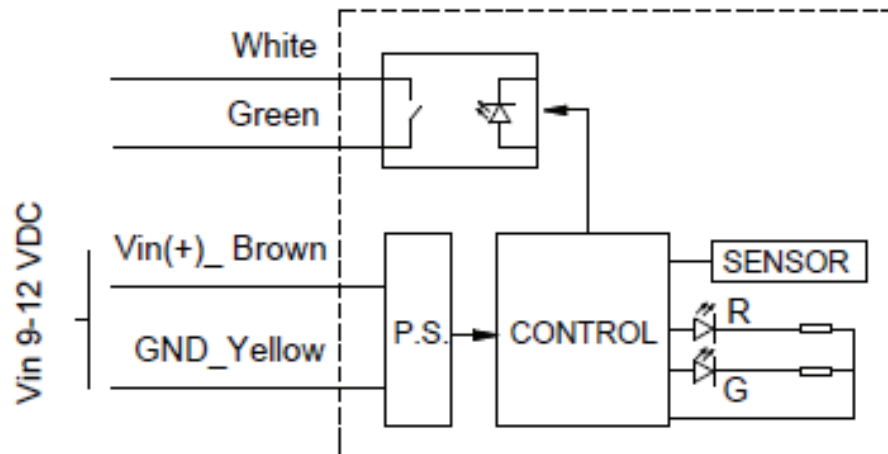
Mechanical Data

Housing Materials	Stainless Steel, Aluminum
Connection	Cable 4x0.14, 300mm
Actuation Force	3-5 N
Finish: Anodize Color	Natural
Operating Cycles	> 50,000,000

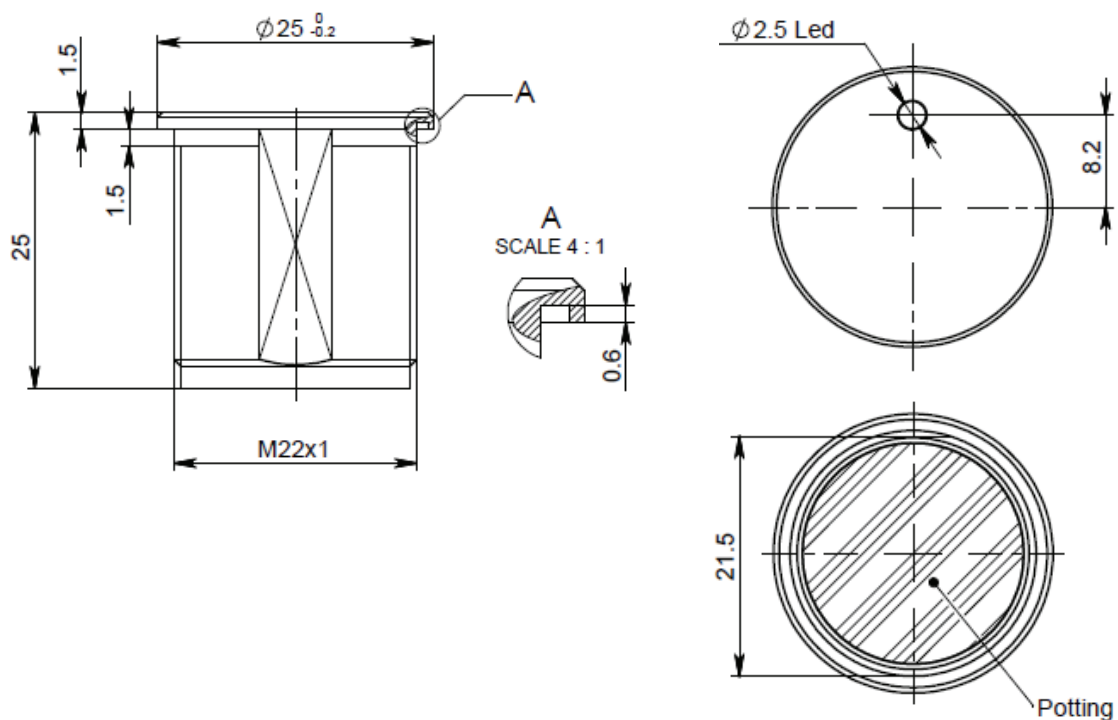
Environmental Data

Operating Temperature	-20°C to +75°C
Storage Temperature	-40°C to +85°C
IP Protection	IP68

Electrical Connection



Mechanical Drawing



*The specifications, descriptions and illustrations indicated in this document are based on current information. All content is subject to modifications and amendments. Users should evaluate the suitability and test each product selected for their own applications.