



Solo

Luxurious glass look, completely sealed

Key Characteristics

- Luxurious glass look, round or square shape
- Front glass, stainless steel housing
- Front tri-color RGB

General Characteristics

- Enhanced touch activated - operation by hand, gloves or tools
- No moving parts, weatherproof - operation unaffected by water, ice, humidity, etc.
- Optional Smart Switch technology - self-diagnostic, Wi-Fi, Bluetooth and IoT capabilities



Electrical Data

Switch Function	N.O. Momentary (N.Closed optional) Toggle (On/Off), Continuous as well as Programmable, Timer, Slide, Self-Diagnostic and WiFi Enabled Optional
Input Voltage	Not required, self-energized piezo technology
Operating Input Current	0.5A max
Output Switch Voltage	0 to 24V AC/DC
Switch Current	1A max
Operating Cycles	> 50,000,000

Mechanical Data

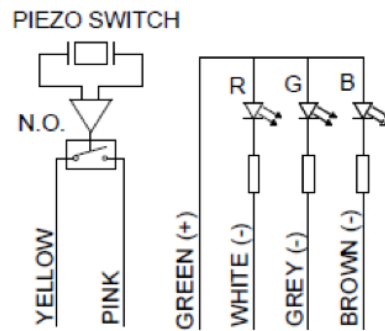
Housing Materials	Stainless steel 316
Nut Material	Brass
Actuating Force	2-6 Newtons
Illuminated Surface	RGB
Led Operation Voltage	24V DC
Led Current	Red – 8mA max Green/Blue – 7mA max
Connection	Cable 6x0.14, Length 300 ±10mm

Environmental Data

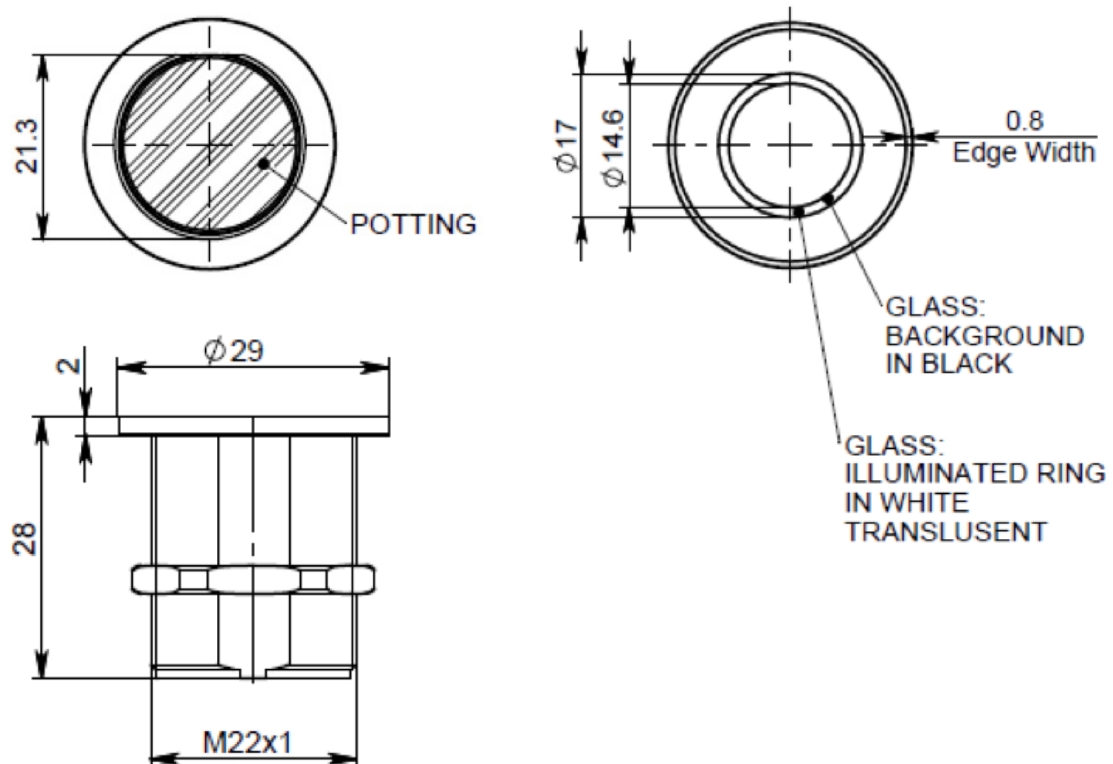
Operating Temperature	-20°C to +75°C
Storage Temperature	-40°C to +85°C
IP Rating Front Panel	IP68



Electrical Connection



Mechanical Drawing



*The specifications, descriptions and illustrations indicated in this document are based on current information. All content is subject to modifications and amendments. Users should evaluate the suitability and test each product selected for their own applications.