



Boat Guard Dual Relay

An End to Boat Switch Problems

Barantech's Boat Guard Dual Relay: the answer to boat switch problems. This ring illuminated piezo touch switch retrofits 22mm pushbutton switches with ease, featuring interchangeable relay modules for maximum flexibility. The NAV/ANC (Navigation/Anchor) functionality of this switch consolidates the controls for both the navigation lights and the anchor light in one convenient switch.

Key Characteristics

- **Streamline light control:** Effortlessly manage NAV/ANC lights based on vessel status (underway or at anchor).
- **Unmatched Durability:** Stainless steel or anodized aluminum housing options for an ultra-rugged design.
- **Seamless Installation:** Snap-on relay module for quick and easy setup, saving you valuable time.
- **Vivid Illumination:** Two colors RB ring illumination for easy control and captivating visual appearance.
- **Reliable and Sealed:** No moving parts, completely sealed against the elements.
- **Enhanced Touch Activation:** Operate by hand, gloves or tools with touch-activated functionality.
- **Built for the Elements:** Unaffected by water, salt accumulation, UV rays, ice, humidity, extreme temperatures as well as shocks and vibrations.

Electrical Data

Switch Function	According to Logic Table (NAV/ANC)
Operating Voltage	12V DC, 200mA
Relay Rated Voltage	12V AC/DC
Relay Rated Current	10A max

Mechanical Data

Housing Materials	Stainless Steel or Aluminum 6061 T651
Relay Box Material	Polycarbonate
Switch Plastic Parts	PA66, Black Color
Actuation Force	3-7 N
Connection	Wires, Length 300+_20mm
Finish	Natural Anodize

Environmental Data

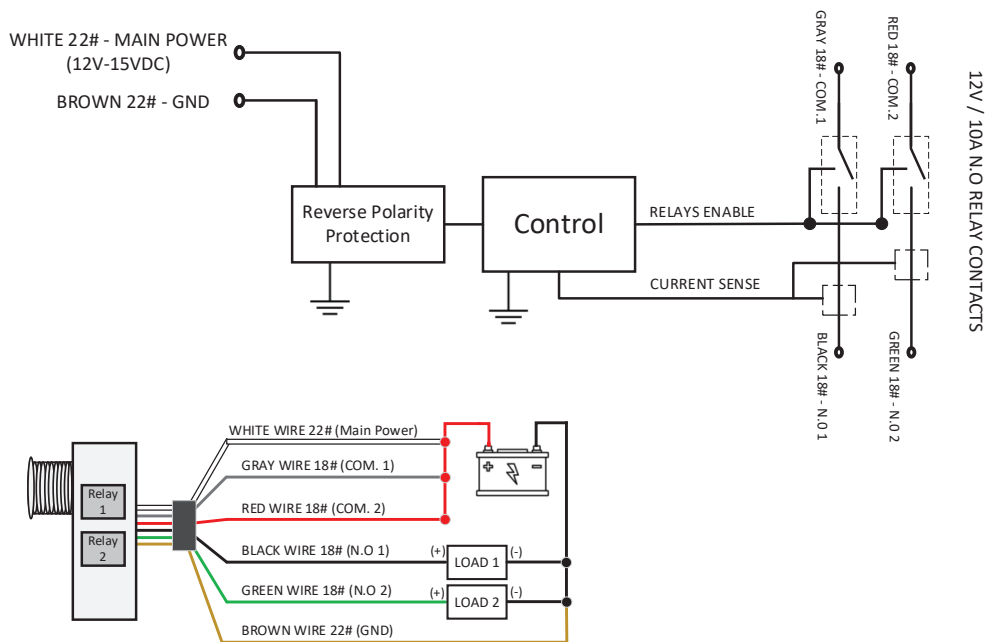
Operating Temperature	-15°C to +55°C
Storage Temperature	-40°C to +75°C
IP Rating	IP67

Logic Table (NAV/ANC)

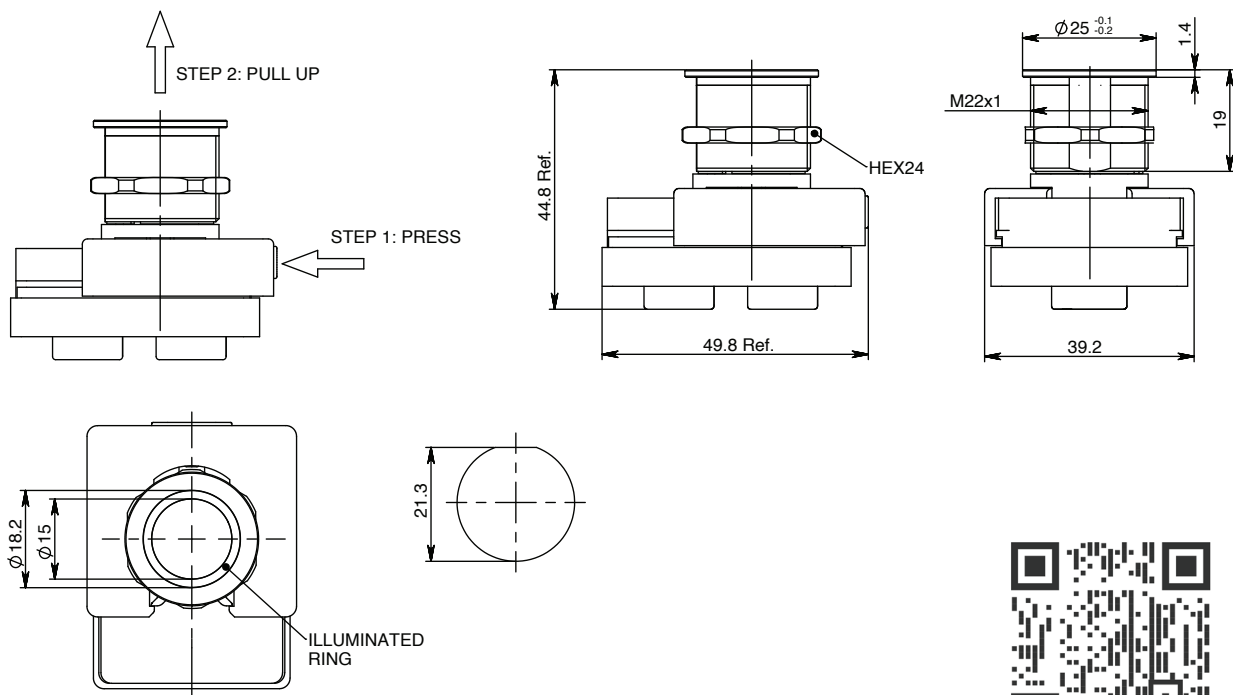
Press #	Relay 1 Status	Relay 2 Status	LED Ring Color (Configurable)
First Press	On	On	Blue
Second Press	Off	On	Red
Third Press	Off	Off	None

* On initial power the relay and led are in off status.

Electrical Connection



Mechanical Drawing



*The specifications, descriptions and illustrations indicated in this document are based on current information. All content is subject to modifications and amendments. Users should evaluate the suitability and test each product selected for their own applications.