



MarineTouch 4Key

Aluminum Switch Panel: Mastering Marine Control

Upgrade your marine experience with our MarineTouch 4Key Control Panel - the ultimate solution for modern boat and yacht control. Designed to seamlessly integrate into your vessel, this state-of-the-art 4-button control panel brings a new level of ease, versatility, and performance to your fingertips.

Key Characteristics

- **Configurable Dot Illumination:** Immerse yourself in intuitive control with four piezo touch buttons that elegantly illuminate to guide your interactions, even in low-light conditions.
- **Responsive Piezo Touch:** Experience instantaneous response with the advanced piezo touch technology, enabling swift and accurate commands by hand, gloves.
- **CAN-Bus Protocol:** Stay connected and in command. Our control panel utilizes the CAN-bus protocol, establishing a robust and efficient communication network.
- **Versatile Switching:** Enjoy diverse control possibilities. From momentary to toggle, prolonged to continuous, timer-based to programmable functions.
- **Built To Last:** Our control panel boasts a sealed, moving-parts-free design, safeguarding against corrosion and ensuring long lasting performance.
- **Your Vessel, Your Rules:** Tailor your control experience to perfection. Customize button assignments, functions, and aesthetics to align with your preferences and operational needs.
- **Ultimate Protection:** Embrace the water world without worry. The control panel's IP69K protection ensures resilience against water, dust, and extreme conditions.
- **IoT-Ready:** Embrace the future of marine control. Unlock optional IoT capabilities through Bluetooth, allowing seamless connectivity and remote management.



Electrical Data

Operating Voltage	12V DC
LEDs	Configurable Dot Illumination
Switch Function	Toggle (On/Off), Momentary, Prolonged, Continuous, Programmable, Timer

Mechanical Data

Housing Materials	Aluminum
Connection	DT04-3P + 3 wires, length of 12" 18AWG DT04-6P + 4 wires, length of 12" 18AWG
Actuation Force	3-5 N
Finish	Black Anodize & Laser Engraving

Connector No. 1

Position	Function	Notes	LED
A	Panel power input 12V+	12V positive for any panel functions as needed	
B	Panel output 12V+ Current: max 3A	When Entry Lights button is pressed, turns on for 5 minutes or if button is pressed again then switches off. Note this is on the courtesy light circuit so may have a backfeed input so protect if necessary.	Blue
C	Panel ground 12V-	Common Ground	

Connector No. 2

Position	Function	Notes		Byte information
1	Panel power input 12V+	Independent input power for swim platform functions. Power supplied when certain criteria are met onboard (i.e. engines off and properly trimmed)		
2	Panel ground 12V-	Independent ground panel for swim platform functions		
3	Can low			
4	Can high			
	Prolonged	Sends commands to raise or lower the swim platform	Byte 5	Bits 1-2: swim platform raise/lower 0 - static 1 - raise platform 2 - lower platform
5,6	No Connection			



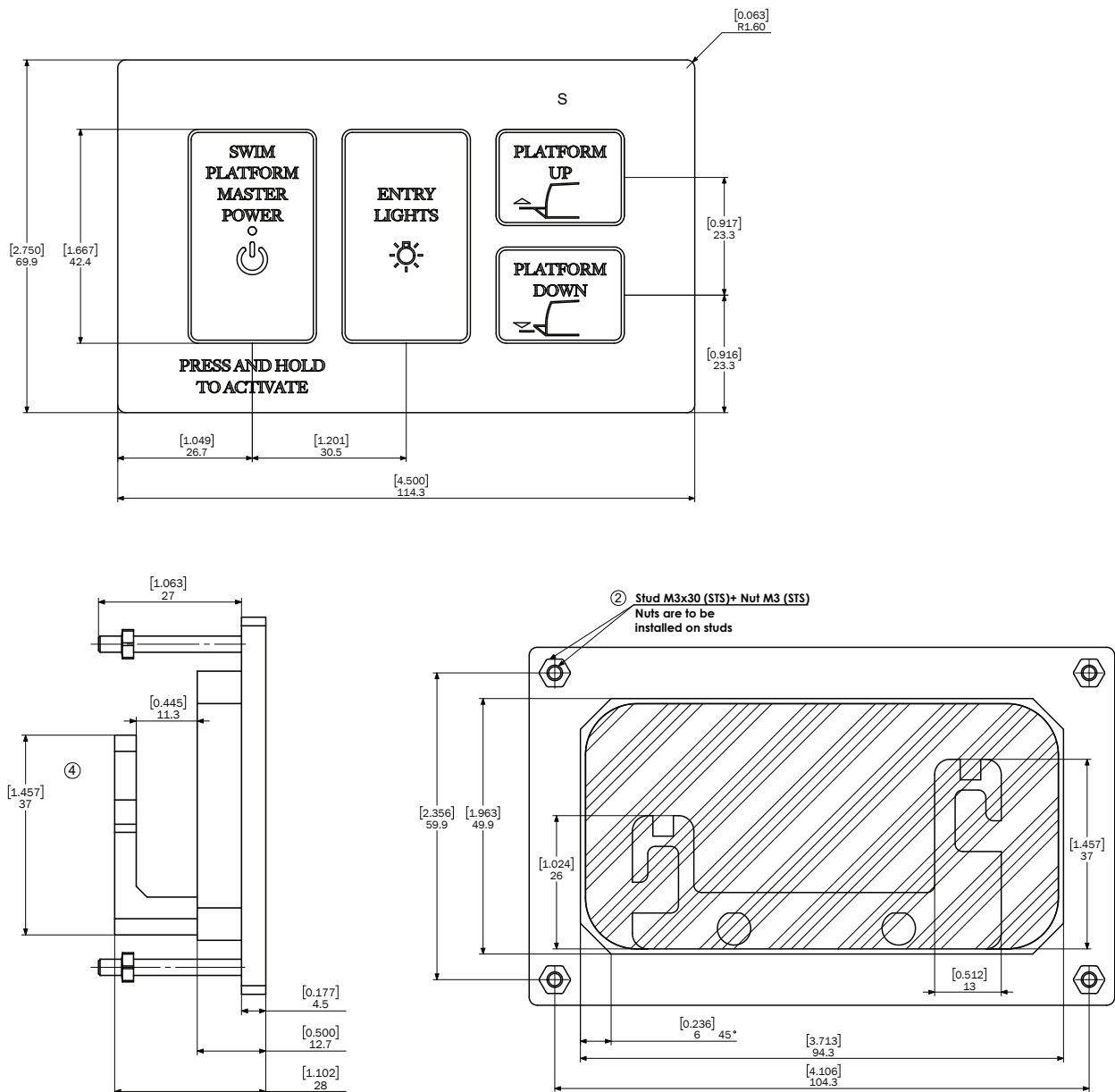
Environmental Data

Operating Temperature -20°C to +75°C

Storage Temperature -40°C to +85°C

IP Protection Front Panel IP69K

Mechanical Drawing



*The specifications, descriptions and illustrations indicated in this document are based on current information. All content is subject to modifications and amendments. Users should evaluate the suitability and test each product selected for their own applications.